

DRYWALL, FINISH PER
SCHEDULE

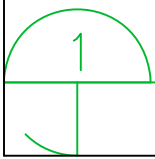
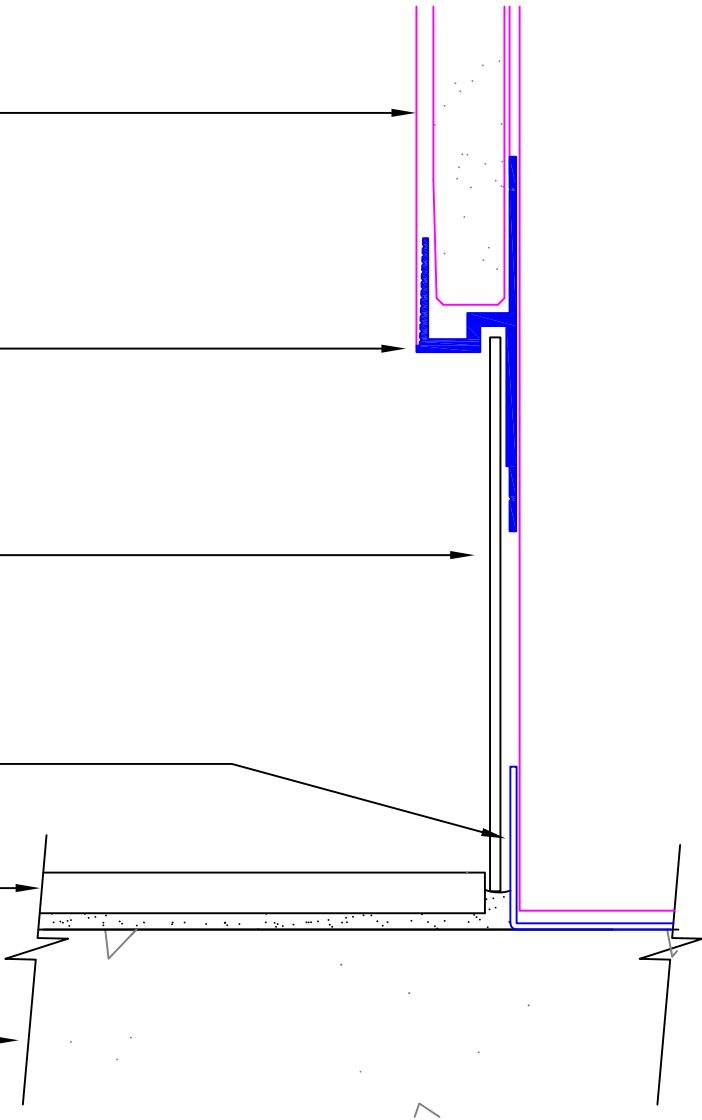
TEKTRIM UMB

SHEETMETAL BASE

ADHESIVE TYP.

FINISH FLOOR

SUBFLOOR



TEKTRIM UMB w/ SHEETMETAL BASE

SCALE: 6" = 1'-0" Extruded Aluminum Alloy 6063-T5