

DRYWALL, FINISH PER SCHEDULE

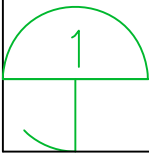
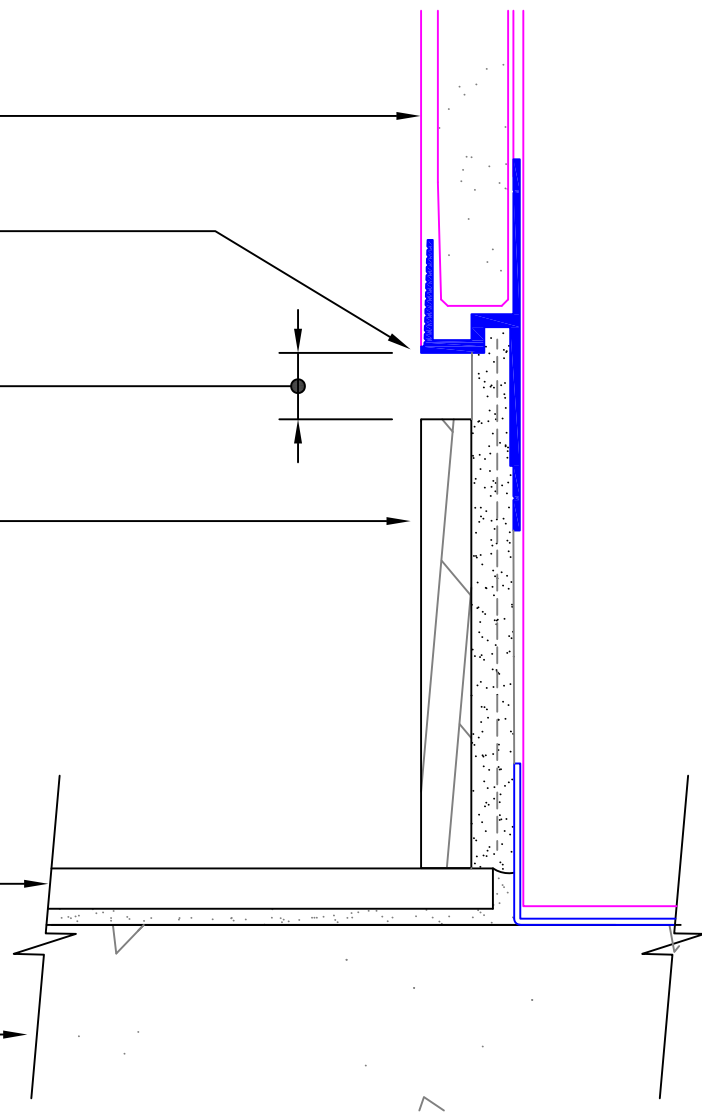
TEKTRIM UMB

1/2" REVEAL

STONE BASE

FINISH FLOOR

SUBFLOOR



# TEKTRIM UMB STONE BASE 1/2" REVEAL

SCALE: 6" = 1'-0" Extruded Aluminum Alloy 6063-T5